

House in Perth

Architect: Ivan Iwanoff:



Careful and artistic planning of this house built recently in Floreat Park, a near suburb of Perth, Western Australia, has given it the rather unique qualities of advanced architecture combined with the mellow dignity and charm usually associated with age. This has been achieved by the tasteful blending of natural materials, especially timber, both in the design and in the skill of the craftsman. Both show an understanding of timber's beauty.

Situated in a high position at 22 Lifford Road, the home was designed by Mr. Ivan Iwanoff.

A major consideration in planning the home was provision for indoors and outdoors entertaining of small intimate parties or more formal receptions.

The high-ceilinged dining-living area measures 32 ft. by 14 ft. A 14 ft. long solid wandoo step 12 in. by 2 in. raises the living area 9 in. above the dining area. The whole floor is covered with blackbutt mosaic tiles.

Double sliding maple doors divide the dining area from the spacious entrance hall. Maple has also been used in the servery, where square copper cover battens and handles blend with the maple wood.

Above the servery vertical jarrah panelling reaches to the ceiling, which is panelled in wandoo. The panelling

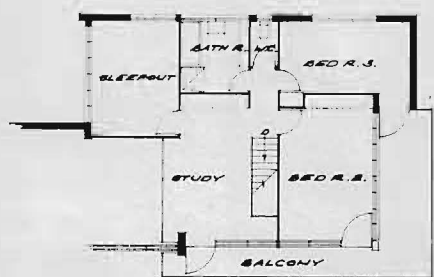
of the ceiling extends over the study, situated directly over the entrance hall with no wall dividing it from the dining-living area below. The study, like the living-dining area commands views of park lands on the south side of the house through a complete wall of glass set in jarrah joinery.

The downstairs area can be converted into a miniature picture theatre with the study used as a projection room. Special provision has been made for heating this big living area. The big stone fireplace, incorporating an exterior feature wall, is surmounted by a divided flue which allows a bigger area of metal to be heated inside the mahogany canopy.

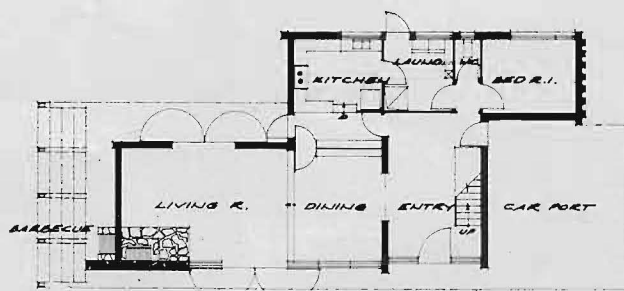
The mahogany veneer panels are 14 in. wide with copper cover battens. The whole of the end of the canopy is a copper-faced door which opens to ceiling height allowing all the trapped hot air from the flue to enter the room.

At night subdued lighting from strips in the jarrah pelmet and from small individual wall brackets set at strategic points, increases the restful, mellow air of the home.

A wide terrace leading off the living room through double doors is the setting for outdoor entertaining. A barbecue has been set in the angle formed by the stone feature wall and the west wall of the house.



FIRST FLOOR PLAN



GROUND FLOOR PLAN