

Draft Floor Plan 2012

Drafted from the available pictures

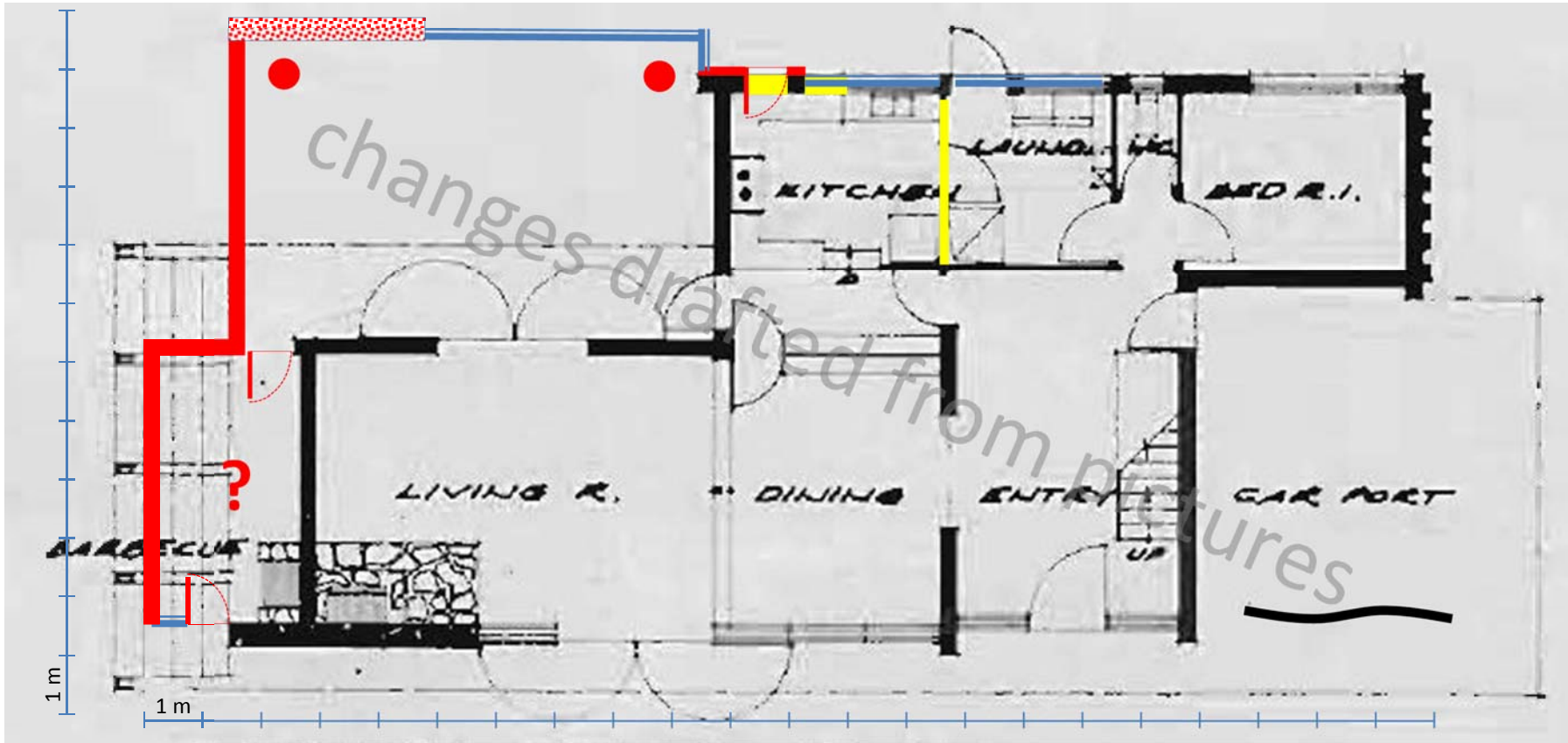
The floor plan on the next pages shows the changes to the original plan from 1958 based on the pictures that were available on the internet 2012 due to the sale of this house. So they may not be entirely correct especially regarding the proportions. I noted where I was entirely uncertain.

new

removed

new/changed windows

?
unclear



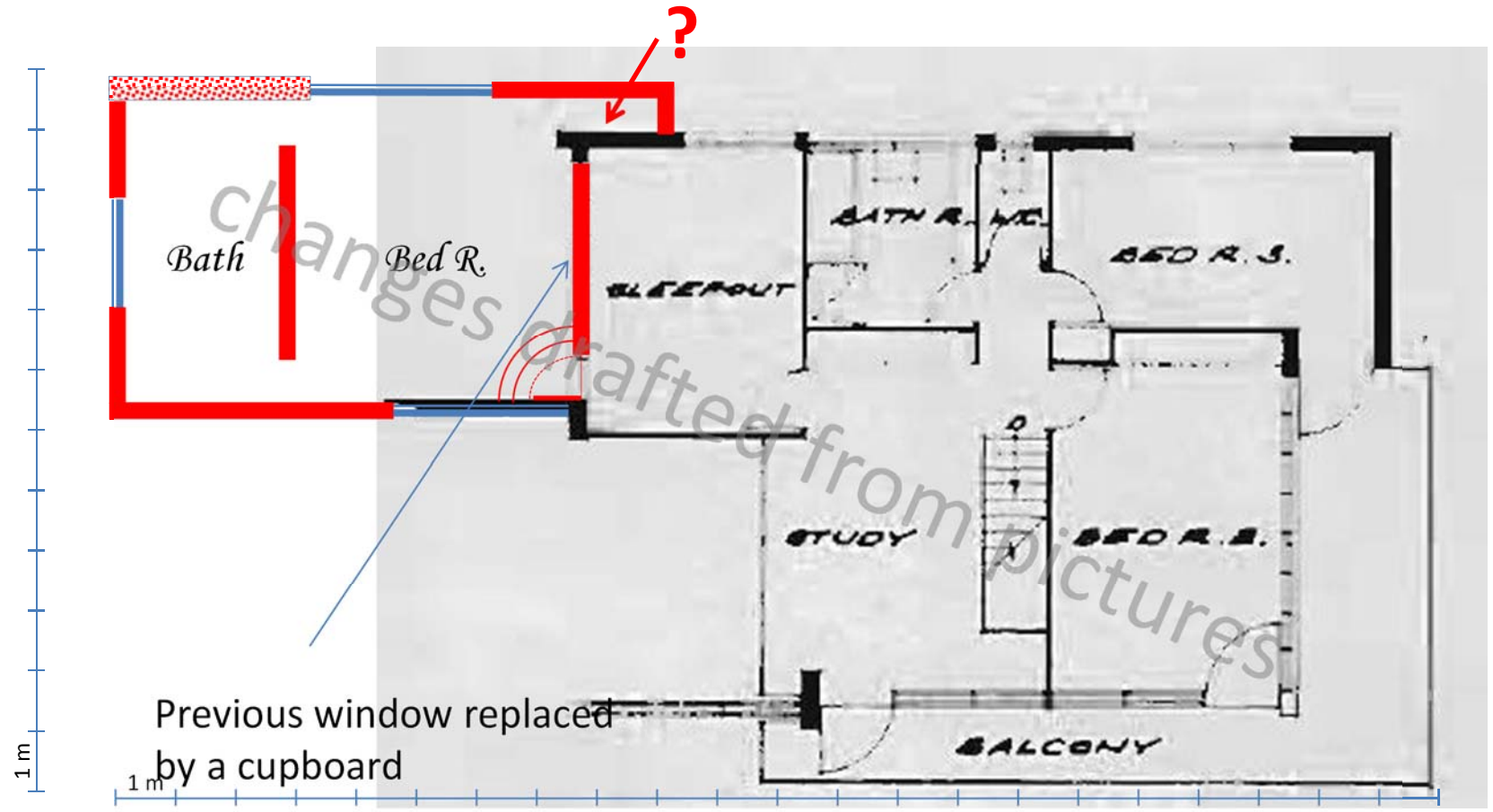
Ground Floor Plan

new

removed

new/changed windows

unclear



First Floor Plan